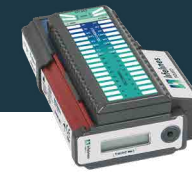


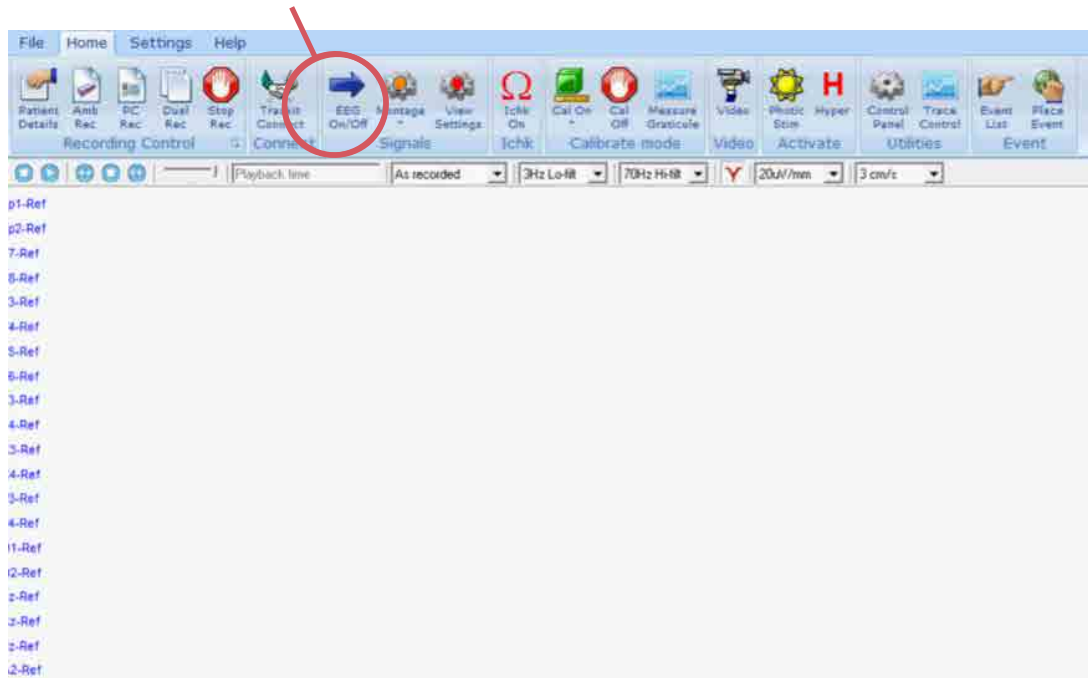
# TRACKIT MK3 – BEST PRACTICES



trackit Mk3

## MK3 Amplifier and Trackit Plus

- 1 During a study, leave the traces **OFF** (EEG On/Off) to conserve battery life

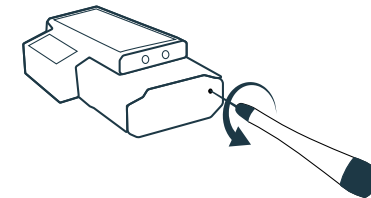


- 2 Use only batteries fully charged when beginning a new study.

- 3 Ensure previous files on the SD card are transferred to another device before beginning a new study.

- 4 When the yellow LED is not lit, you may change the CF card:

- a. Open the Trackit Mk3 rear battery box/door with the special tool provided.



- b. Remove the card by carefully pressing the black eject button on the left edge of the card slot with a plastic ballpoint pen or similar tool.
- c. The unit's warning beeper will sound for a few seconds and the Door Open symbol on the display will flash.

- 5 The yellow Light Emitting Diode (LED) indicates CF Card activity. When it is on, this means the Trackit Mk3 is writing data to the PC Card.



Imagine EEG Anywhere

# TRACKIT MK3 – BEST PRACTICES

## Maintenance and Cleaning

- 1** The Trackit Mk3 contains no user-serviceable parts (apart from replaceable batteries). The system uses solid state components and requires no routine testing or maintenance procedures apart from occasional cleaning and checking for wear and damage to all parts including the accessories.
- 2** All the outer surfaces of the individual pieces of equipment of the Trackit system may be cleaned using a soft cloth moistened with water and a mild detergent.
- 3** Each item may also be cleaned using a low-pressure airline or a vacuum cleaner.
- 4** Wipes are recommended in order to prevent the ingress of any liquid into the equipment.
- 5** Follow your Lab Protocols

