

QUICK START GUIDE

A Set up the main unit and cables

1. Remove the Trackit M from the case. Connect the power cord to the unit and plug it into an electrical outlet.



2. Remove the Custom or Standard Headbox from the case. Connect the magnetized connector to the patient cable port.



Custom Headbox

Standard headbox

3. Remove the event marker from the case. Connect the magnetized connector to the event marker port.



B Set up the video camera

1. Unfold and assemble the video tripod.
2. Remove the video camera assembly from the case. Slide it onto the receiver on the tripod, then tighten the rail lock.



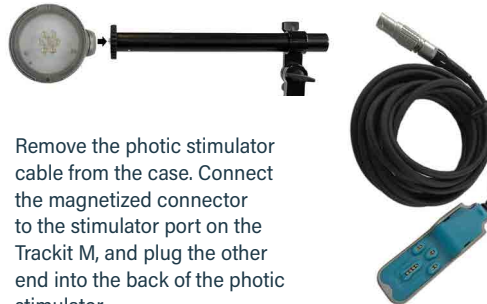
3. Connect Ethernet cable to back of camera and to Trackit M.



4. Connect EM1024AR power supply to camera and power outlet.


C Set up the photic stimulator

1. Unfold and assemble the photic stimulator tripod.
2. Rotate the boom parallel to the ground by loosening the bolt, pulling up, then tightening the bolt.
3. Remove the photic stimulator from the case and screw it to the end of the boom, rotating the stimulator until it is tight.



4. Remove the photic stimulator cable from the case. Connect the magnetized connector to the stimulator port on the Trackit M, and plug the other end into the back of the photic stimulator.
5. Connect power supply (EM1024HR larger barrel) to back of the photic and power outlet

D Connect the electrode leads and start the study

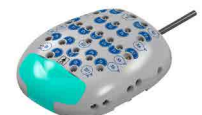
1.  Open the Trackit M display and press the power button to turn it on. Log in using your Windows username and password, verify there is a WIFI connection. Double click the Rendr Acquisition icon to log in with your Rendr username and password. Ensure the Rendr software has synchronized.
2. In the software, click NEW or OPEN to start a study, then follow the on-screen prompts.



3. Install cap or connect the electrodes to the patient's head. Note that the Reference, Ground, and Midline (Fz, Cz, and Pz) electrodes must be applied for the Impedance check to begin.
4. Connect each electrode lead to the appropriate headbox. *Note the Custom Headbox has proprietary reusable leads that correspond to the color coding.*

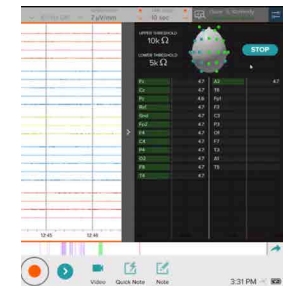


Custom Headbox



Standard headbox

5. From the Rendr Acquisition Review screen, select the top right fly out menu and select the impedance icon. When complete, use the right facing arrow to close the impedance window. You may now select the video icon and start to begin the study



QUICK SET-UP GUIDE

- A** Plug in the laptop, peripherals, and attached camera power cords. Power up the laptop.



- B** Log into windows username and password. Verify WIFI connection.

- C** Select Rendr Acquisition icon

- D** Rendr Login – username and password. Ensure device is synchronized.

- E** Select 'New Study'



- F** Select the right facing arrow at the top right of the tool bar



- G** Select Study Type 'Routine'



- H** Choose amplifier, select 'Connect'



- I** Select 'Next' (bottom right of screen)



- J** Select Video Camera icon (yes to use video) and adjust camera to show player



- K** Install cap and check impedance. Select the top right fly out menu, then select the impedance icon and start to begin impedance check.



Note that the Reference, Ground, and Midline (Fz, Cz, and Pz) electrodes must be applied for the Impedance check to begin.

- L** Select Red Circle (bottom of screen)



- M** Record EEG for specified time.

- N** Select John Doe pencil icon. Edit with patient first and last name and DOB



- O** Select stop recording – select Square in Red circle (select yes).



- P** Select 3 bars top left flyout menu



- Q** Select Exit Study, Submit and Leave. You may choose to share the study, but not required. You will return to the Rendr Acquisition Home Screen.

