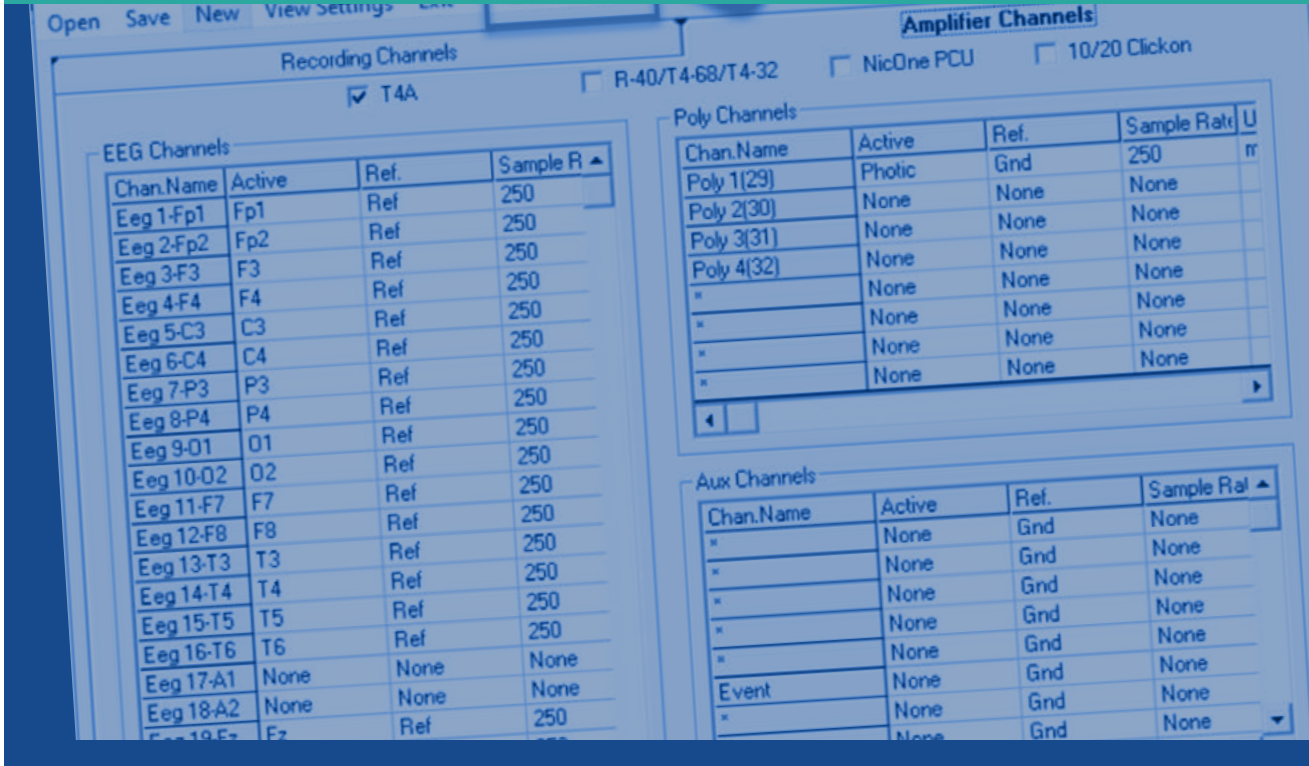


# SETUP FILE (TSU) CREATION in Trackit+





## Getting Started

Identify the Trackit amplifier you are using:



Trackit Mk3



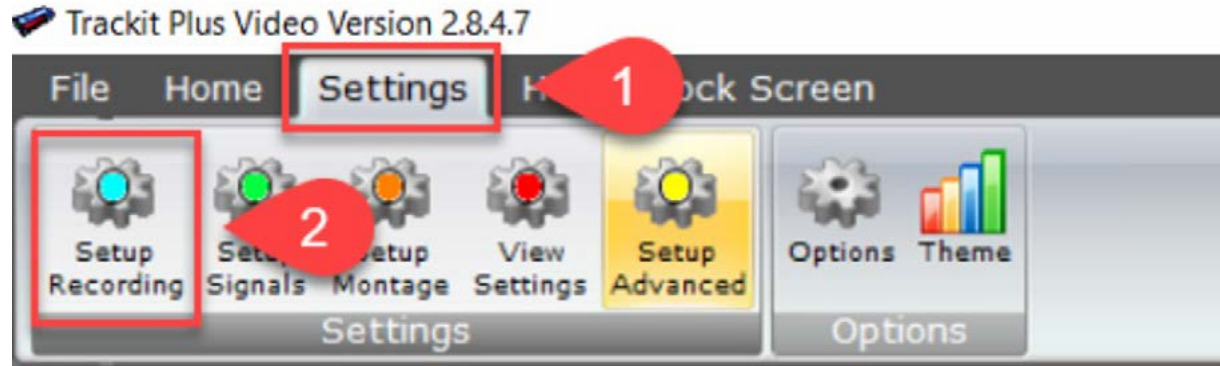
Trackit T4A

## Navigate to Setup Recording Screen

1. Click on the **Settings** tab at the top of the window in the Trackit+ software,
2. Click on **Setup Recording** in the menu bar.

**PLEASE NOTE**

If the Wizard is open in your software, you will need to close it in order to navigate the menus in Trackit+.



This will open the **Setup Recording** window.

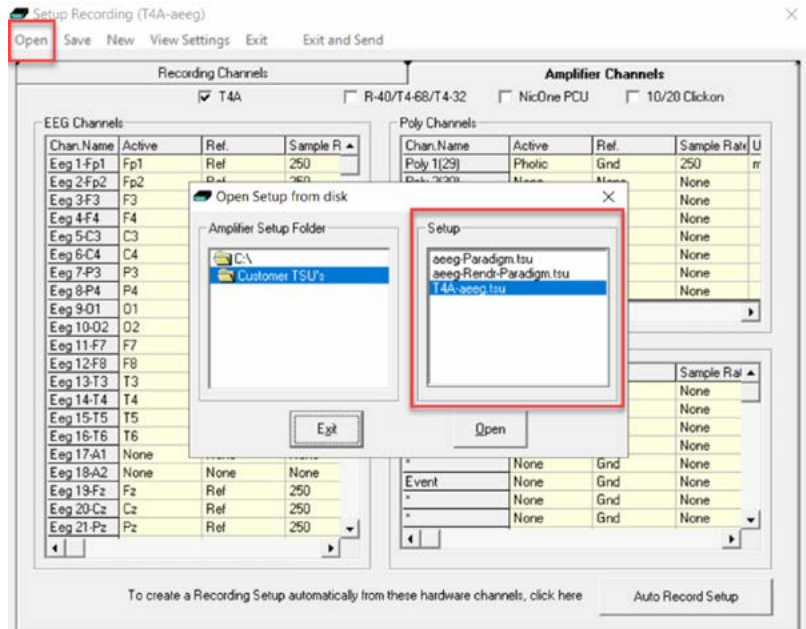
# The Setup Recording Window

Click open at the top left of the window to select an existing setup.

**NOTE** The last used setup will be selected.

When selecting the setup file, ensure that you identify your amplifier (T4A, MK3), as the setups are different for each. If you don't see the setup file you wish to modify, you will need to navigate to the file location to select it.

If you are unsure of the location, please feel free to contact Lifelines Support, and we will be more than happy to assist you.



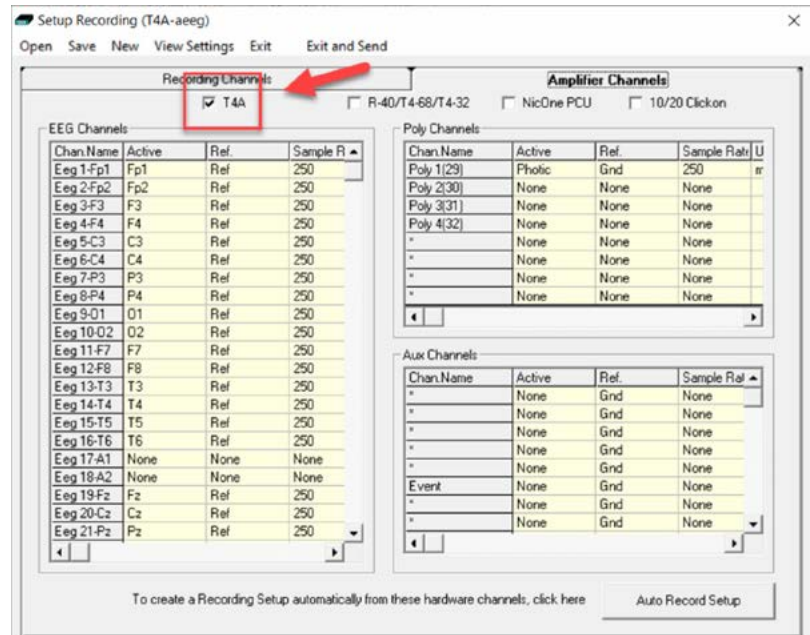
## The Setup Recording Window (continued)

Once you have selected the setup file, you will need to go to the checkbox for the T4A at the top left of the window.

**NOTE** If you are modifying a T4A setup, then leave the box checked. For a MK3, uncheck the T4A box.

When selecting the setup file, ensure that you identify your amplifier (T4A, MK3), as the setups are different for each. If you don't see the setup file you wish to modify, you will need to navigate to the file location to select it.

If you are unsure of the location, please feel free to contact Lifelines Support, and we will be more than happy to assist you.

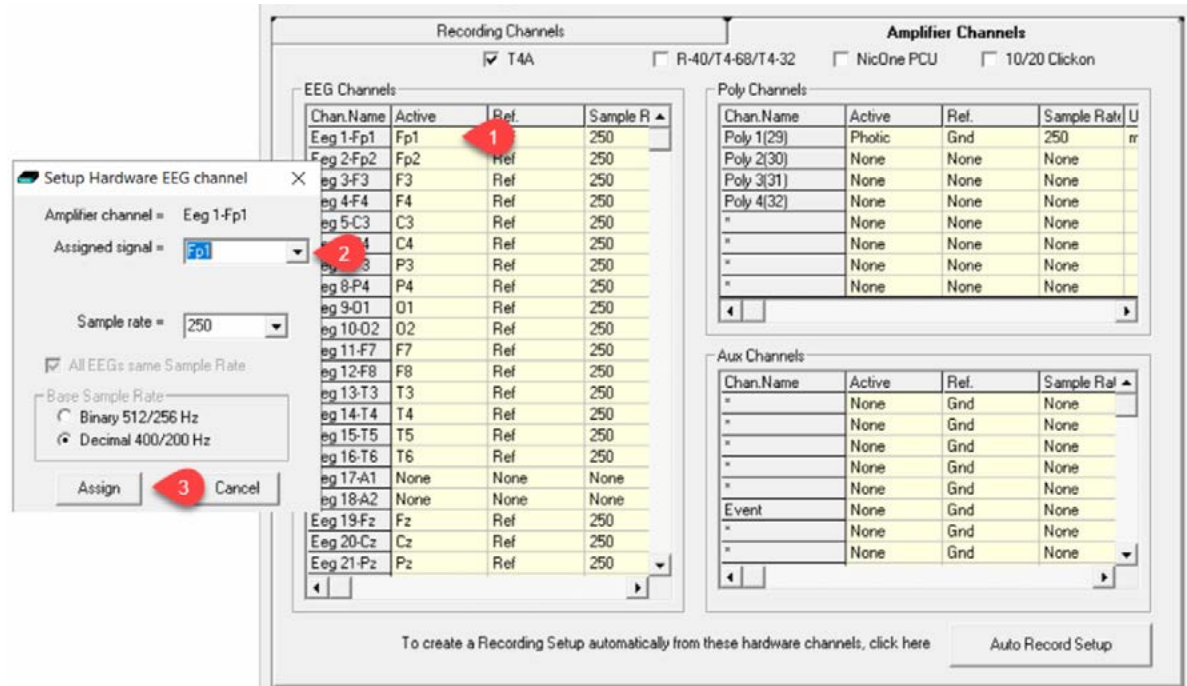


Next, you can modify the inputs 

# Modifying the Inputs

1. Double click the channel that you wish to change
2. Click the down arrow and make your channel input selection
3. Click **Assign** to save your selection.

Repeat this process for each channel that you wish to change or modify.



The screenshot displays the 'Recording Channels' window with the 'Amplifier Channels' section active. A 'Setup Hardware EEG channel' dialog box is open, showing the configuration for 'Eeg 1-Fp1'. The 'Assigned signal' dropdown is set to 'Fp1'. The 'Sample rate' is set to '250'. The 'Base Sample Rate' is set to 'Decimal 400/200 Hz'. The 'Assign' button is highlighted with a red circle 3.

Chan.Name	Active	Ref.	Sample R
Eeg 1-Fp1	Fp1	Ref	250
Eeg 2-Fp2	Fp2	Ref	250
Eeg 3-F3	F3	Ref	250
Eeg 4-F4	F4	Ref	250
Eeg 5-C3	C3	Ref	250
Eeg 6-C4	C4	Ref	250
Eeg 7-P3	P3	Ref	250
Eeg 8-P4	P4	Ref	250
Eeg 9-O1	O1	Ref	250
Eeg 10-O2	O2	Ref	250
Eeg 11-F7	F7	Ref	250
Eeg 12-F8	F8	Ref	250
Eeg 13-T3	T3	Ref	250
Eeg 14-T4	T4	Ref	250
Eeg 15-T5	T5	Ref	250
Eeg 16-T6	T6	Ref	250
Eeg 17-A1	None	None	None
Eeg 18-A2	None	None	None
Eeg 19-Fz	Fz	Ref	250
Eeg 20-Cz	Cz	Ref	250
Eeg 21-Pz	Pz	Ref	250

Chan.Name	Active	Ref.	Sample Rate	U
Poly 1(29)	Photic	Gnd	250	rr
Poly 2(30)	None	None	None	
Poly 3(31)	None	None	None	
Poly 4(32)	None	None	None	
*	None	None	None	
*	None	None	None	
*	None	None	None	
*	None	None	None	

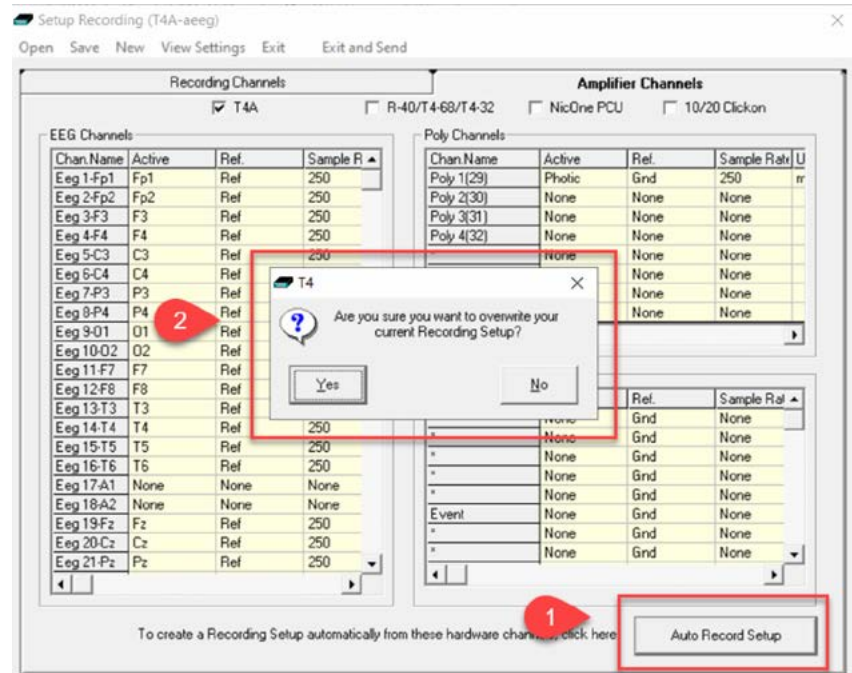
Chan.Name	Active	Ref.	Sample Rate
*	None	Gnd	None
*	None	Gnd	None
*	None	Gnd	None
*	None	Gnd	None
*	None	Gnd	None
*	None	Gnd	None
Event	None	Gnd	None
*	None	Gnd	None
*	None	Gnd	None

To create a Recording Setup automatically from these hardware channels, click here Auto Record Setup

## Modifying the Inputs (continued)

When you have completed your changes:

1. Click the **Auto Record Setup** button in the bottom right corner of the window
2. Click **Yes** when prompted - *Are you sure you want to overwrite your current Recording Setup.*



### NOTE

You may have to click on the **Auto Record Setup** button a couple of times for the second window to appear.



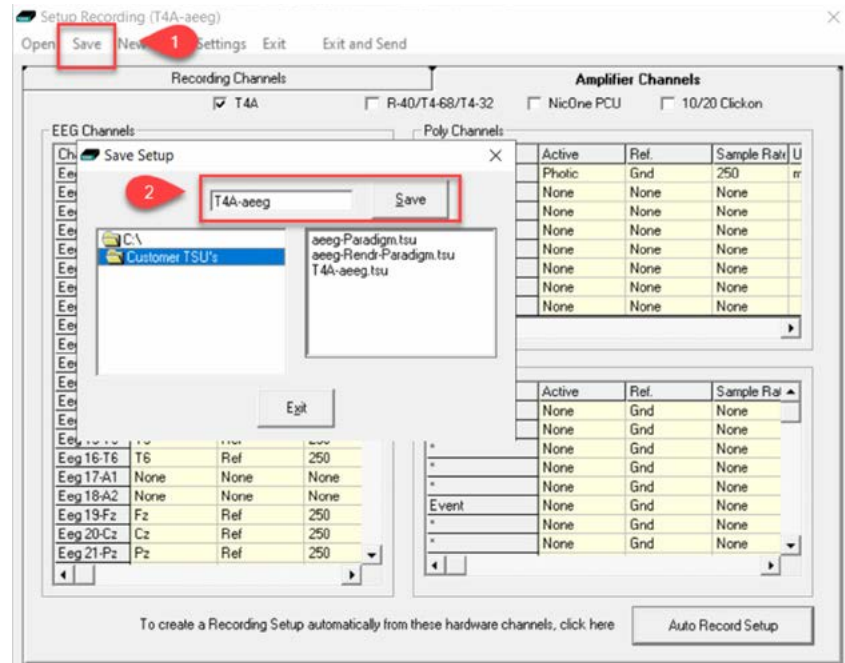
## Saving Your Modifications

Now that you have made the modifications to the setup file, you will need to save your progress.

In order to do this:

1. Click **Save** at the top left of the **Setup Recording** window.
2. Choose a name for the setup file and then click **Save**.

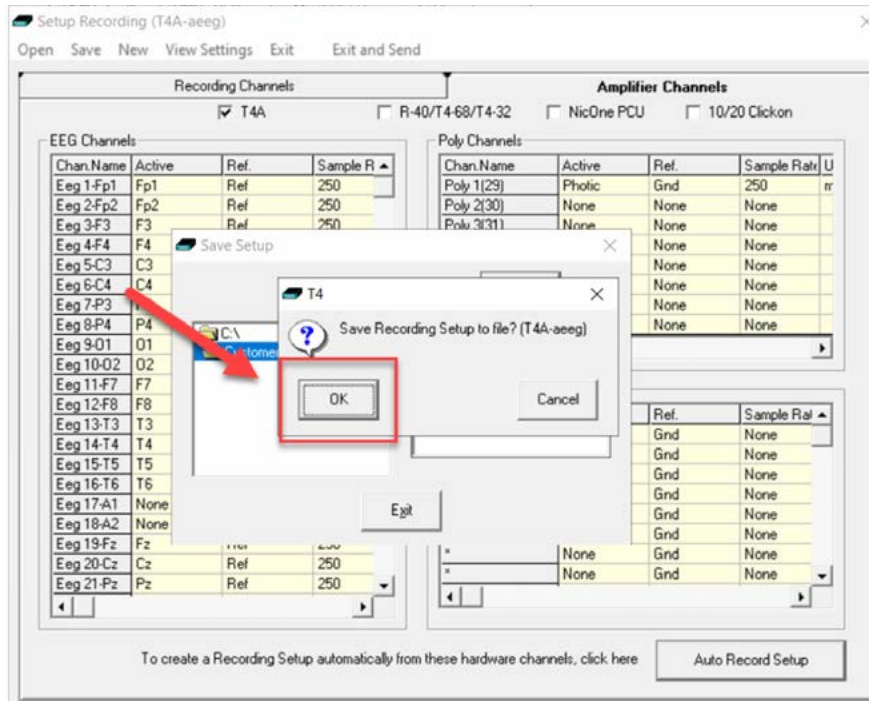
If you merely want to overwrite the current setup, then just click **Save**. If you want to change the name, type the new name of the setup file and then click **Save**.





## Save Recording Setup

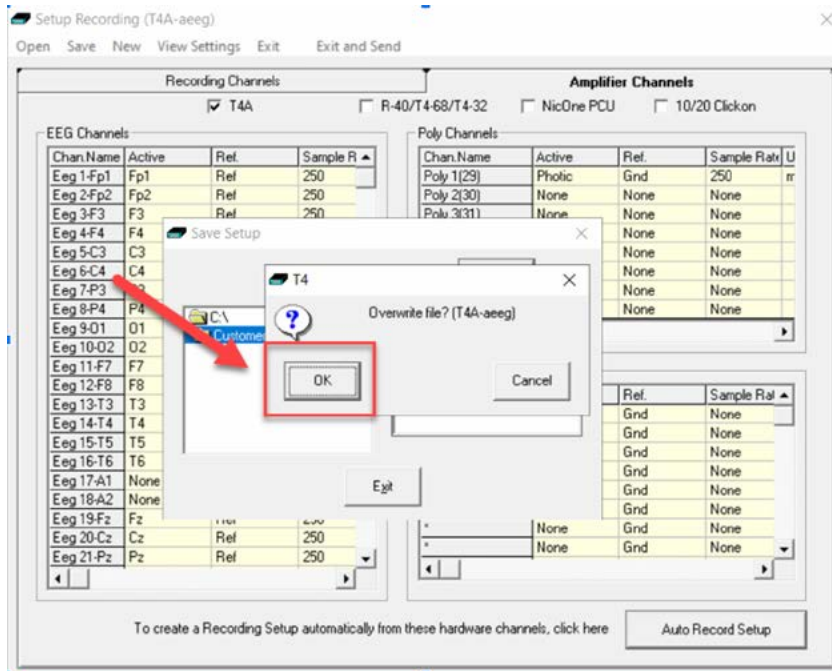
When you click on **Save**, another window will appear and will ask you – **Save Recording Setup to file? (T4A-aeg)** and will list the name of the setup file that you are saving. Click **OK**.



# Overwrite Previous Setup File

After clicking **OK**, another window will appear to overwrite the file - Click **OK**. This will overwrite the previous setup file.

If you rename the setup file, you will not get this prompt as you are creating a new one and not overwriting the previous one.

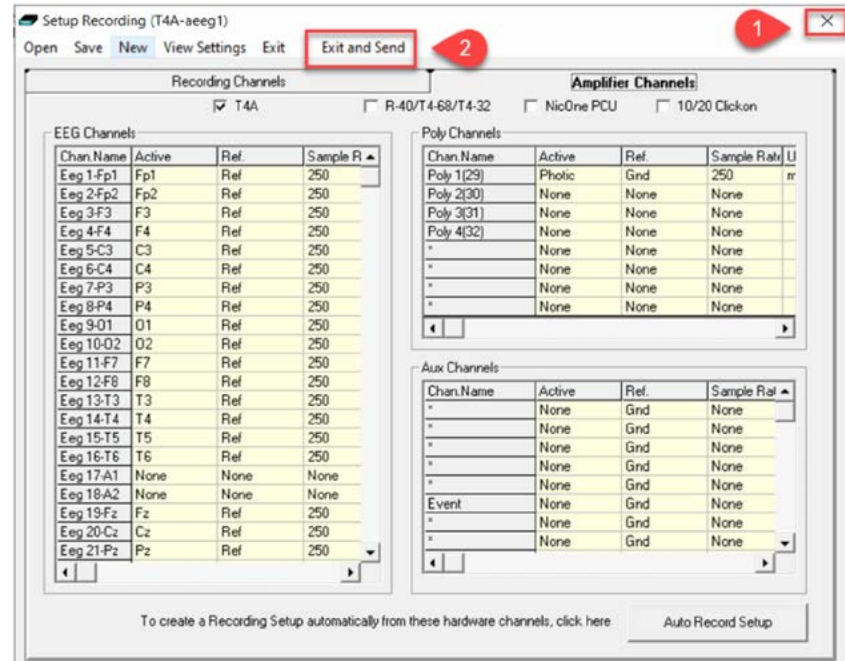


## Final steps

You have now saved your setup file and it is ready for use.

You can either:

1. Close the **Setup Recording** window
- or
2. Click on **Exit and Send** and the setup will be loaded into the Trackit+ software.



If you require specific programming for other types of channels (i.e. Photic, EMG, Respiration, Pulse Oximetry, etc.) please contact Lifelines Support and we will be happy to assist you.



## For additional assistance

Tel: 866-889-6505

Email: [support@lifelinesneuro.com](mailto:support@lifelinesneuro.com)