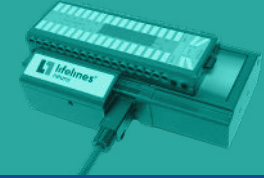


Trackit Mk3



Compact Flash Cards



CF Card Specification

Flash cards used in the Trackit recorder must conform to the following specification:
 CF (Compact Flash) Trackit MK2 (silver case) and Trackit MK3 (red case)

Card Size	16 Channel Recordings		24 Channel Recordings		32 Channel Recordings	
	Sampling Frequency 200 Hz 256 Hz		Sampling Frequency 200 Hz 256 Hz		Sampling Frequency 200 Hz 256 Hz	
640 MB	27.8 hrs	21.7 hrs	18.5 hrs	14.5 hrs	13.9 hrs	10.9 hrs
800 MB	34.7 hrs	27.1 hrs	23.1 hrs	18.1hrs	17.4 hrs	13.6 hrs
1 GB	43.4 hrs	33.9 hrs	28.9 hrs	22.6 hrs	21.7 hrs	17.0 hrs
2 GB	86.8 hrs	67.8 hrs	57.9 hrs	45.2 hrs	43.4 hrs	34.0 hrs
4 GB	173.6 hrs	135.6 hrs	115.8 hrs	90.4 hrs	86.8 hrs	68.0 hrs

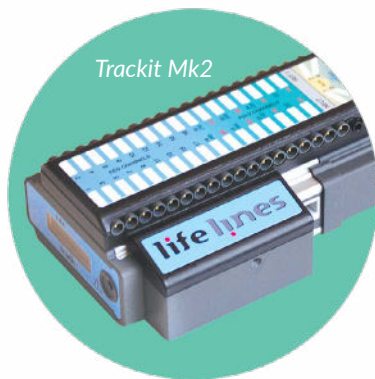
Maximum CF Card Size

Trackit Mk3	Firmware 4.2 or newer	Up to 4 GB, formatted FAT32
-------------	-----------------------	-----------------------------

Flash Card Formatting

NOTE: These instructions apply to MK3 amplifiers only – CF Cards purchased from Lifelines will arrive formatted. If you purchase them from another source, you will need to ensure that they are formatted correctly.

NOTE: Cards must be formatted based on the Trackit version being used. Older Trackits require formatting as FAT16, not FAT32. Newer Trackits support the FAT32 formatting. The best way to ensure the correct formatting, is to format the flash card using the Trackit format tool from within the Trackit software

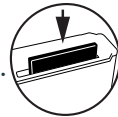


Format Instructions

Using Trackit Software Format Tool

Trackit Software 2.5.30 or newer.

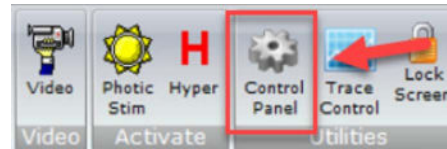
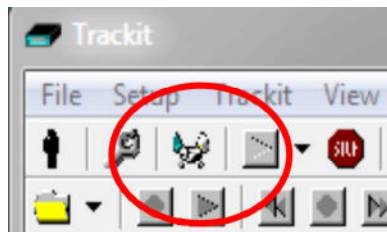
- A** Place the flash card in the Trackit.



- B** Turn on the Trackit.

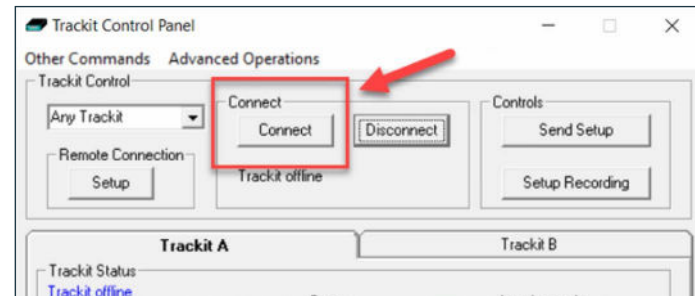
Connect the Trackit to the PC using the PC interface cable or Bluetooth. Launch the Trackit software on the PC – if the Wizard comes up, click the “x” to close the Wizard.

- C** Click on the handshake icon to launch the Trackit control panel, or, in new releases of Trackit, click the Control Panel icon in the toolbar.



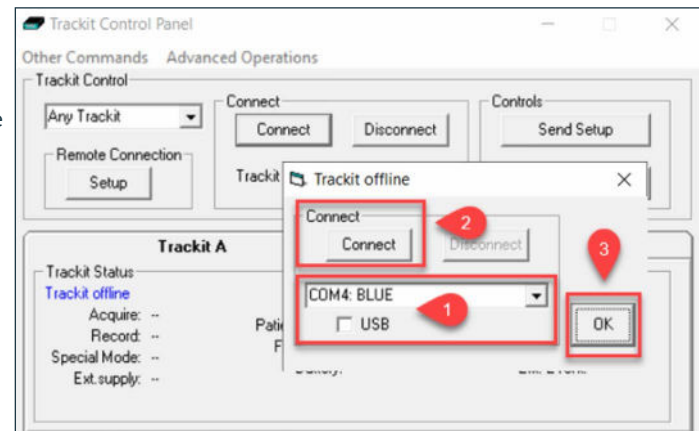
Format Instructions Using Trackit Software Format Tool (continued)

- D** Click the connect button.



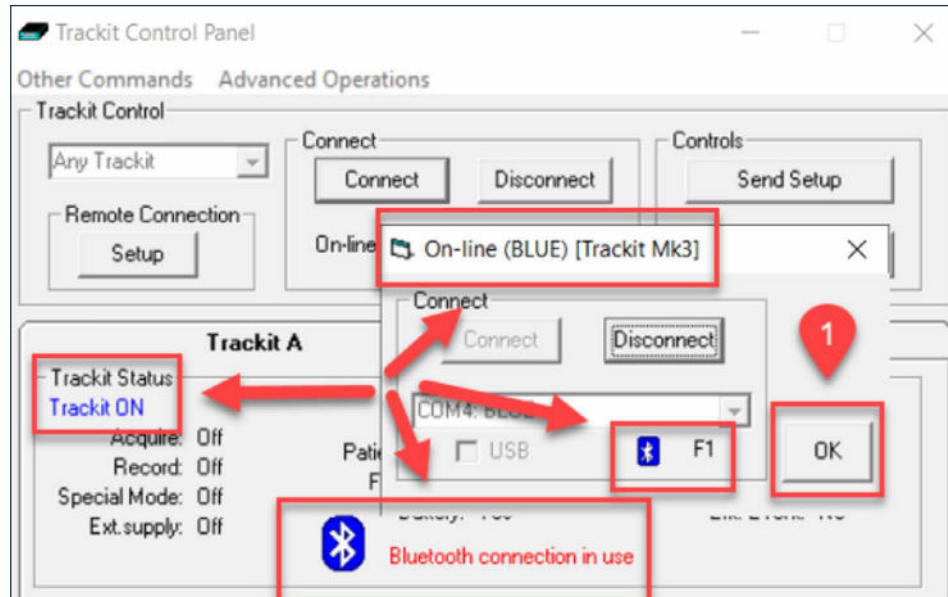
- E** A second window opens and you will:

- 1 Verify the COM Port is set correctly or check the USB box, if using the PC interface cable - *Remember to turn the Bluetooth off on the MK3 if using the cable*.
- 2 Click the "Connect button",
- 3 Click the "OK" button to connect the amplifier.



Format Instructions Using Trackit Software Format Tool (continued)

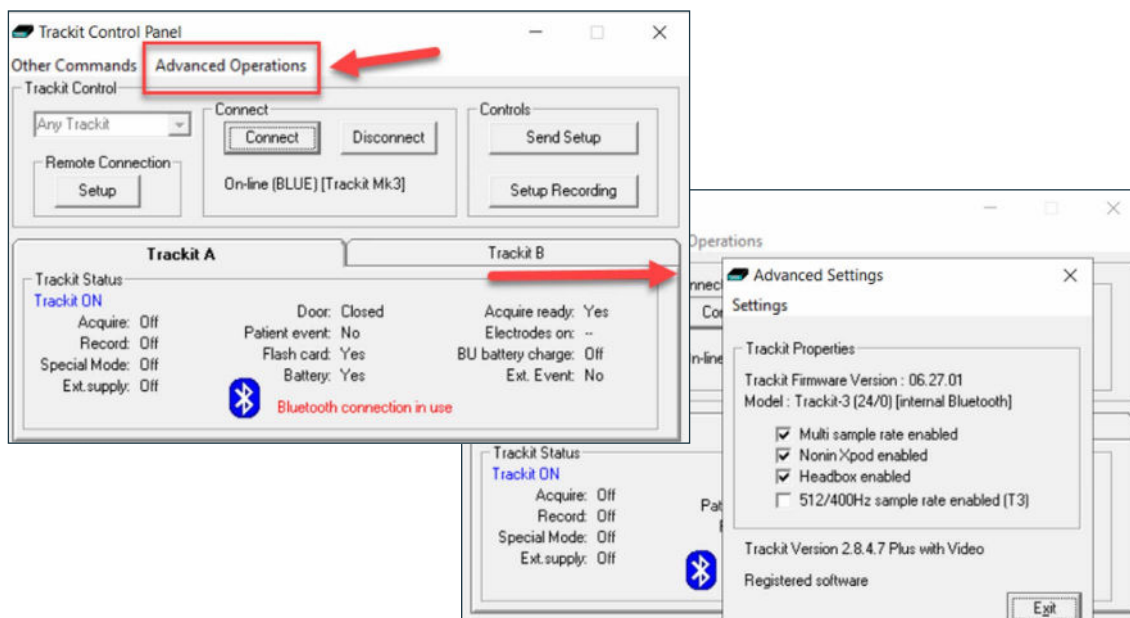
- F Once the amplifier is connected, you will notice there are several areas in the window to indicate the connection to the software (depending on the connection type - Bluetooth or Interface cable).



Now, click "OK" to close that window.

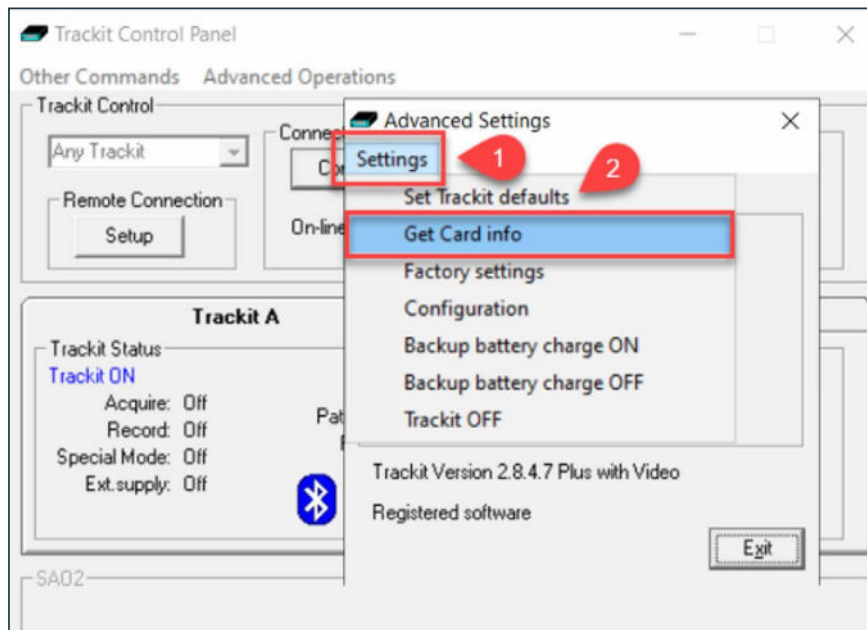
Format Instructions Using Trackit Software Format Tool (continued)

- G** Click on the Advanced Operations menu to display the advanced settings dialog.



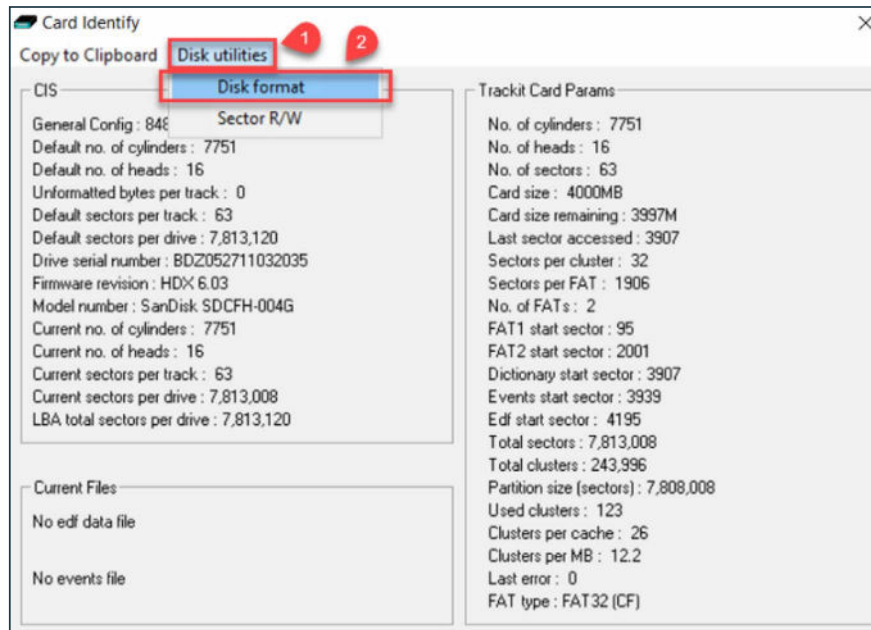
Format Instructions Using Trackit Software Format Tool (continued)

- H Next, click on the **Settings** menu and then select **Get Card info**.



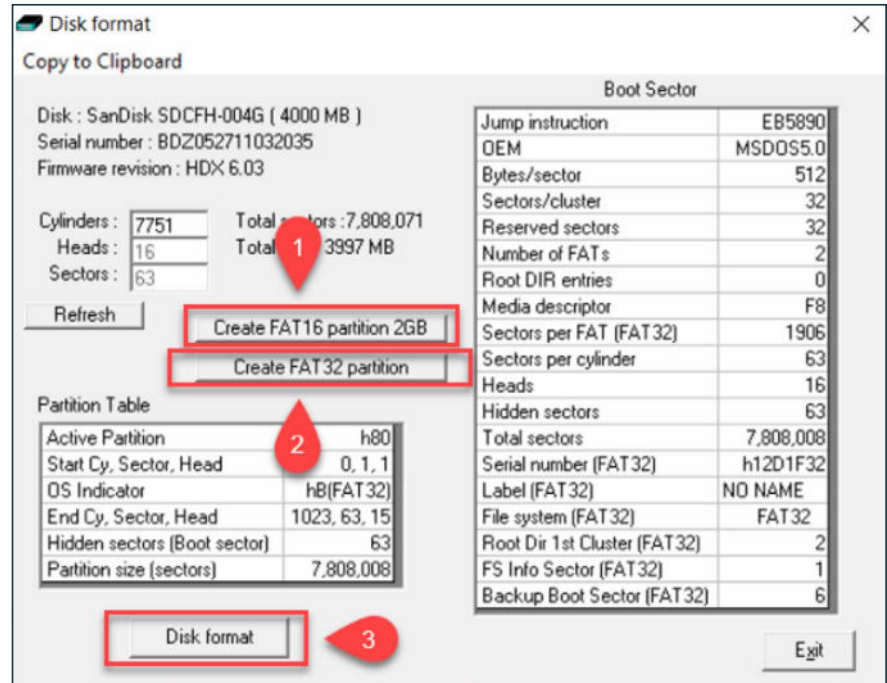
Format Instructions Using Trackit Software Format Tool (continued)

- 1 Next a card identity screen is displayed indicating the format for the flash card. Click on **Disk utilities** and then select **Disk format**.



Format Instructions Using Trackit Software Format Tool (continued)

- J** To use the card in an older Trackit or to limit the card to a 2GB partition size: Click 1 - **Create FAT16 partition**.
- K** To use the card in a newer Trackit MK3, formatting the disk to its capacity for use in late model Trackit systems: Click 2 - **Create FAT32 partition**.
- L** When you have chosen your desired partition, Click 3 - **Disk format**.

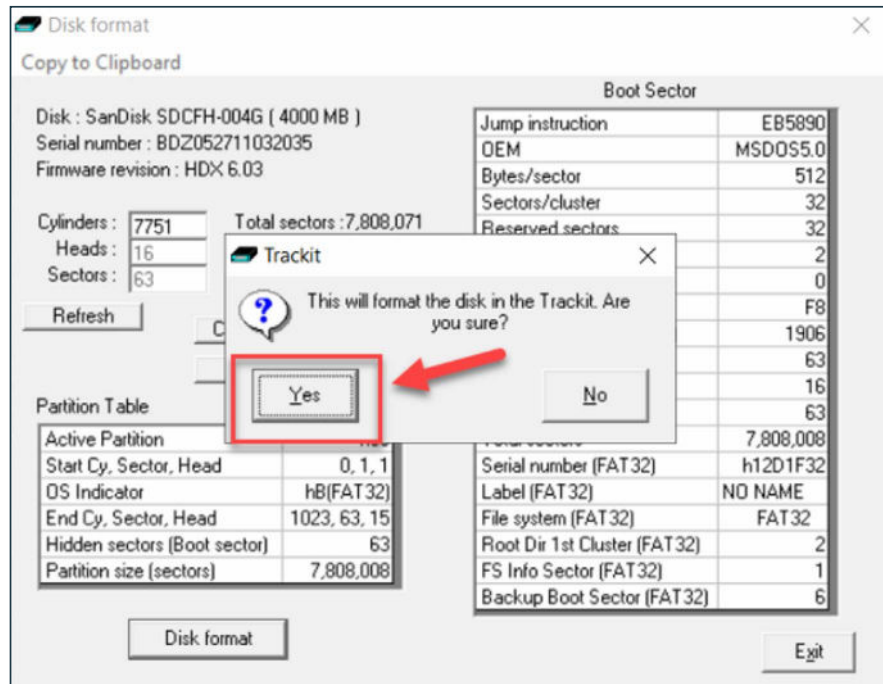


Format Instructions Using Trackit Software Format Tool (continued)

- M** You will then be prompted to select **Yes** or **No** to format the disk.

Click **Yes** to perform the formatting

NOTE: Keep in mind that all the data will be erased from the CF card during this process



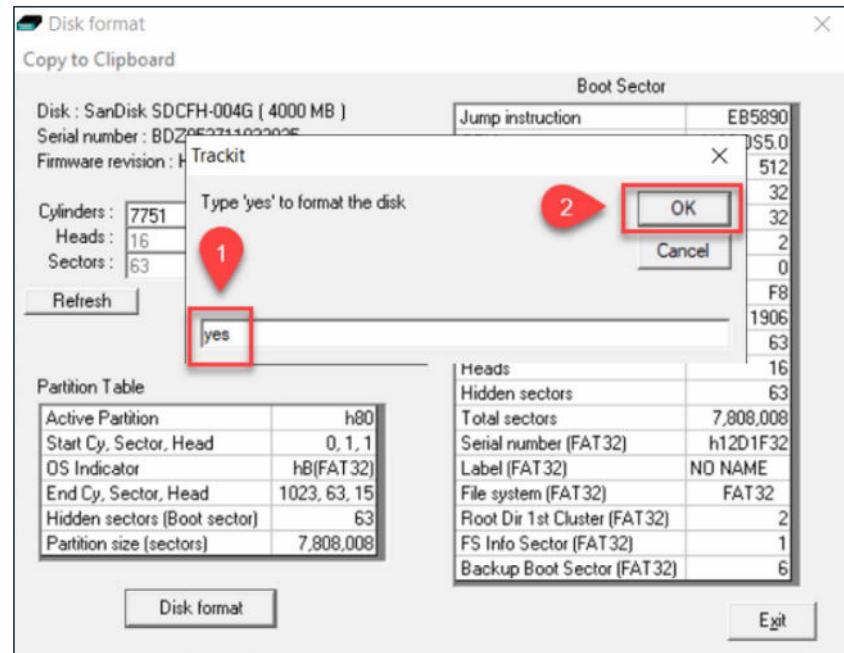
Format Instructions Using Trackit Software Format Tool (continued)

N A second prompt will appear after clicking **Yes** to ensure that you want to format and erase any data on the disk.

Once again, if you are sure it is ok to format the CF card

1. Type **yes** (lower case)
2. Click **OK**.

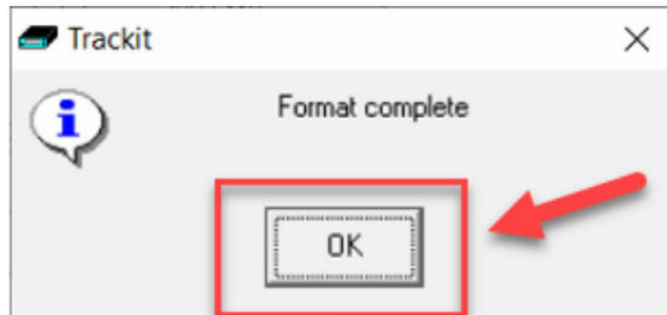
NOTE: Keep in mind that all the data will be erased from the CF card during this process



Format Instructions Using Trackit Software Format Tool (continued)

- This process takes about 20 seconds and a **Format complete** message will appear when completed. Click **OK**.

The disk will now be formatted correctly for Trackit use.



You can now exit all screens and use the Trackit software as normal.



For additional assistance

Tel: 866-889-6505

Email: support@lifelinesneuro.com